

**LAND
PURCHASE**

ROBERT POKORNY

HOWARD FONDA

JASON SILVA

AMPERSAND

GALLERY & FINE BOOKS

SALES

MYLES HASELHORST, 503-805-5458

myles@ampersandgallerypdx.com

GALLERY

2916 NE ALBERTA STREET

PORTLAND, OR 97217

WWW.AMPERSANDGALLERYPDX.COM

Ampersand is pleased to present *Land Purchase*, a group exhibition featuring works on paper by Jason Silva, Howard Fonda and Robert Pokorny. The show's title serves as metaphor for open space as a framework for creativity. We live in an age of rapid innovation and instant communication, consummated and consumed, it seems, primarily in boundless digital spaces. And while we are rightly enthralled by and freely partake in all this connectivity, it's worth noting that trending tags on Instagram, let's say, often have something to do with tangible escapism—a trip across country in a van, maybe, or the building of a dwelling in the woods. Does this observation relate to something innate in all of us or does it have more to do with my own recent interest in notions of empty space and the possibilities therein? A land purchase, for instance, both literal and figurative, something modest in the current moment or something grand in the past, like The Louisiana Purchase or the fabled acquisition of Manhattan Island by a Dutch settler in 1626. Both were moments of sublime unknown connected to a raw expanse, from which new ways of living, languages, architectures and implements ultimately grew (at the expense, it should be noted, of much that was primitive and native to the land).

Open space: technology in the case of innovators; blank paper, pencils and acrylics in the case of the artists in this show. All three seem to occupy a place between the current moment and the distant past, between the exact limitations of their practice and intuition. The small graphite drawings by Jason Silva, for example, utilize a vocabulary of repeated forms that imply a seemingly impossible, yet new direction in architecture while also alluding to more primitive shelters. Troughs, rigging, ropes and plumbing fixtures reference a type of civil engineering that may have existed in the past or forecast some future form of infrastructure. Unique furniture shapes, unusual symbols and recurring pattern suggest living beings of some kind, but we never see them. Perhaps it's possible, though, that the characters in Pokorny's and Fonda's drawings can temporarily occupy, like actors on a stage, Silva's imaginary world. Pokorny's figures and mask-like shapes echo the human form but are talismanic in nature. They could be, in this context, anthropological sketches of brooding sculptural forms or evidence of some unknown culture carved into the facade of stone walls. Or, as Pokorny puts it, they are not reality as perceived but rather an attempt to

take a complicated visual world and with precise and intuitive flourish establish a honed version of it. This notion is echoed in the work of Howard Fonda, whose seemingly naive and loose drawings evidence his adoration of the romantic notion that fuses intellect with intuition. In the case of the imaginary world of this exhibition, his drawings seem to represent the interaction of humankind through sexuality, language and, if we read into the symbology of his raised hands, perhaps even religion. In dialogue, however, he notes that his drawings do not attempt to create specific meanings, but instead are an act of seeking, allowing for inquiries and tangents that transcend given styles, tropes or mediums. It is, then, not by chance that upon visiting his studio you will see a portrait of Whitman or a copy of Thoreau's *Walden* sitting on his desk.

Robert Pokorny lives and works in Los Angeles, California. His drawings and paintings have been exhibited widely in both the United States and Europe. Pokorny received his MFA in Fine Art from California State University Long Beach.

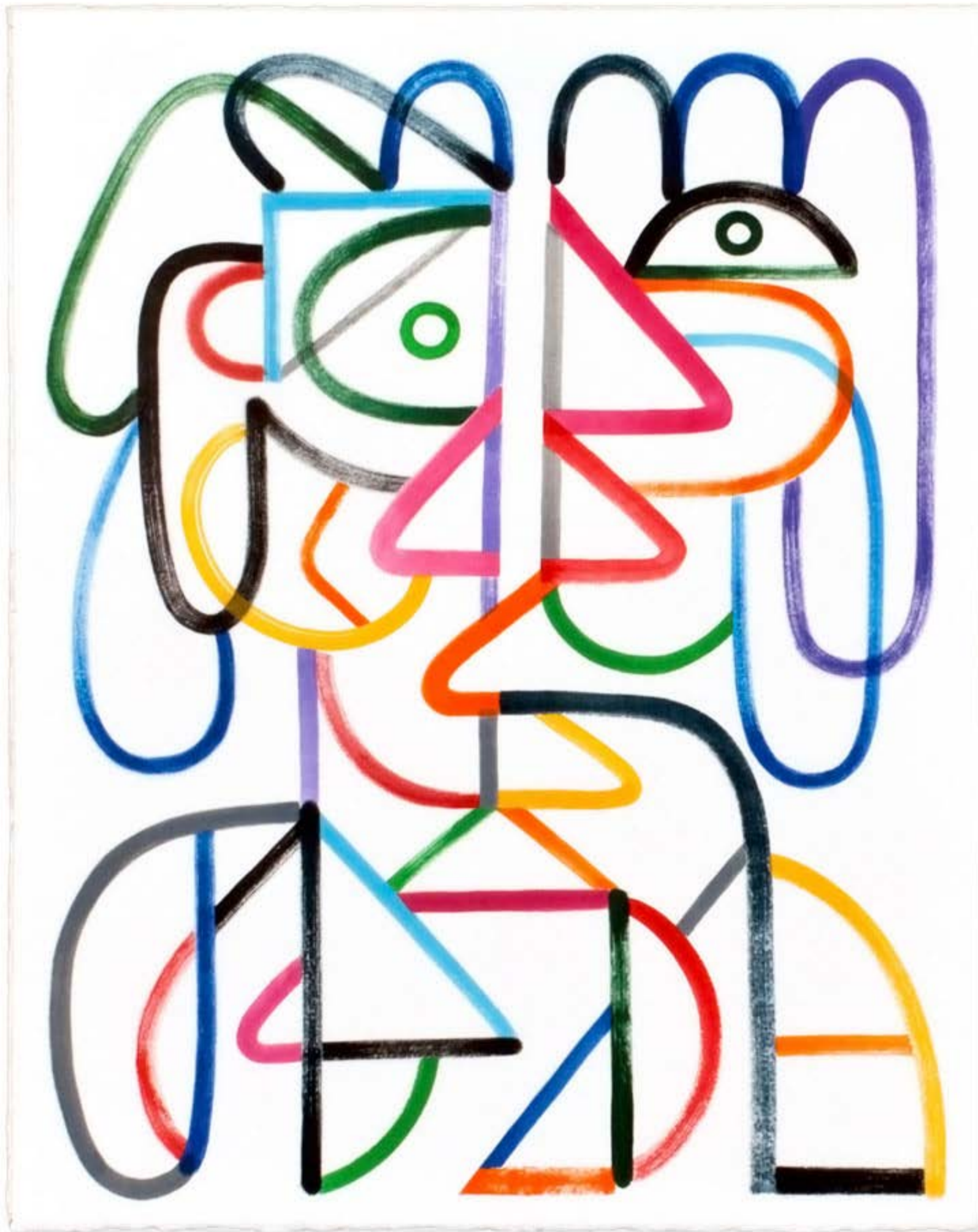
Jason Silva lives and works in Brooklyn, New York. He received his MFA from The School of Visual Art in New York City. With origins in making 16mm films and video, since 2009 he has been working on a series of small, systematic drawings. Recent exhibitions include Paper Pushing at Marvin Gardens (New York).

Howard Fonda lives and works in Portland, Oregon. He received his MFA in painting and drawing from the School of the Art Institute of Chicago. Recent solo exhibitions include Thoughts Form a Stolen Land at The Dot Project (London) and Les Premiers Seront Les Demiers at the Governor's Office (Salem, OR).



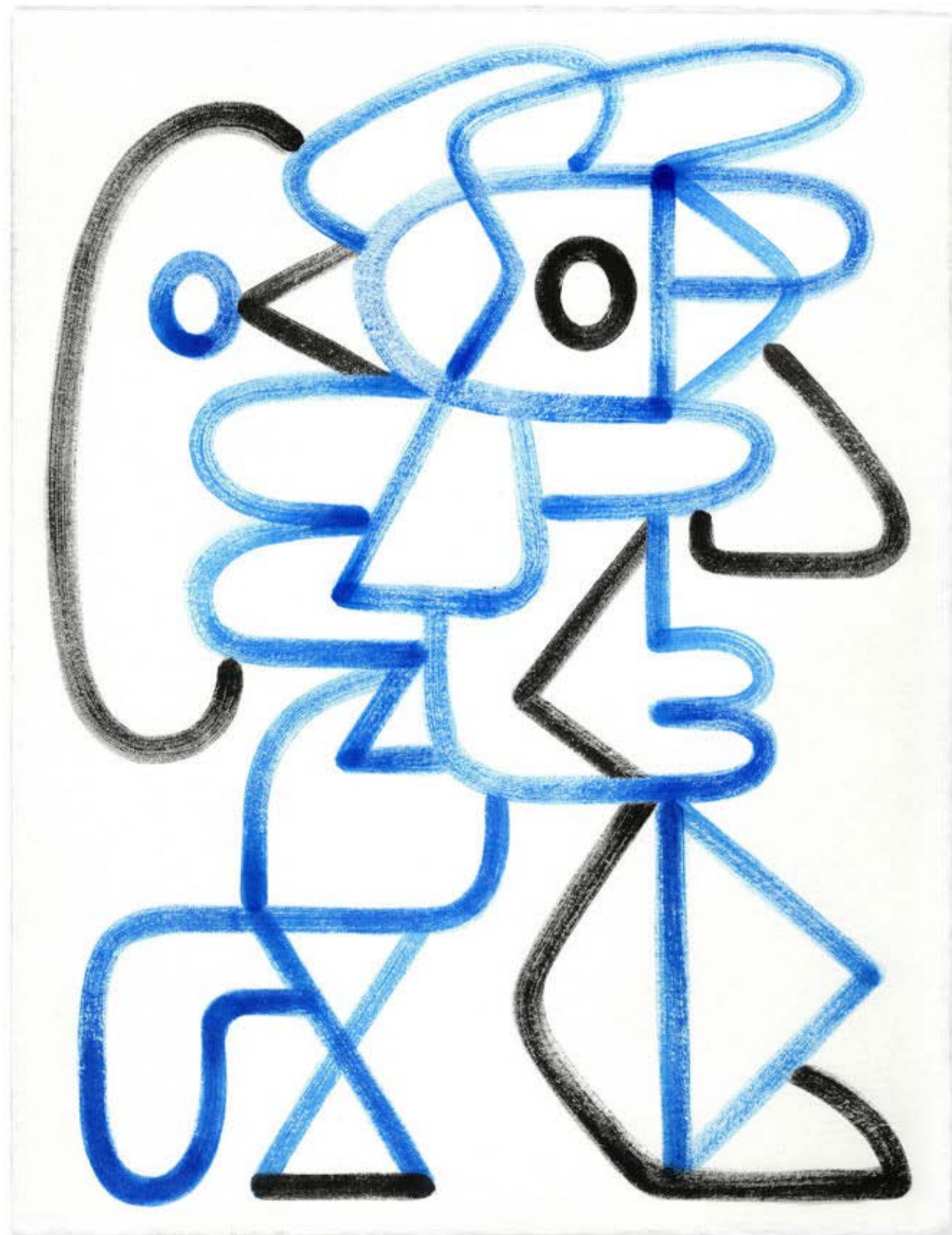
ROBERT
POKORNY

MM1, 2017
Acrylic on Saunders watercolor paper
20 x 16 in.
Framed



ROBERT
POKORNY

WM1, 2017
Acrylic on Saunders watercolor paper
20 x 16 in.
Framed



ROBERT
POKORNY

Blue Line Man 1, 2017
Acrylic on Saunders watercolor paper
11 x 8 1/2 in.
Framed



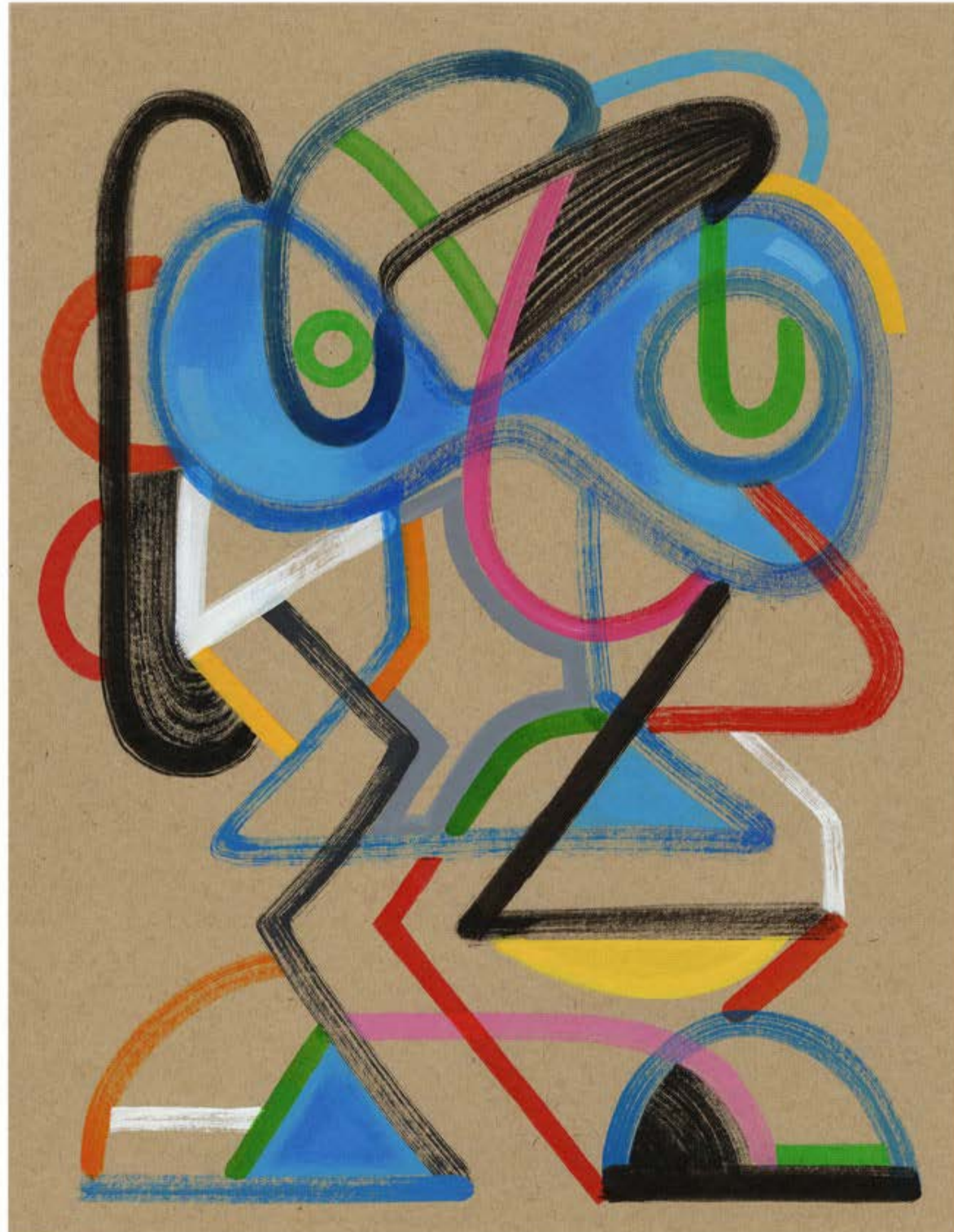
ROBERT
POKORNY

Blue Man 2, 2017
Acrylic on Muscletone
11 x 8 1/2 in.
Framed



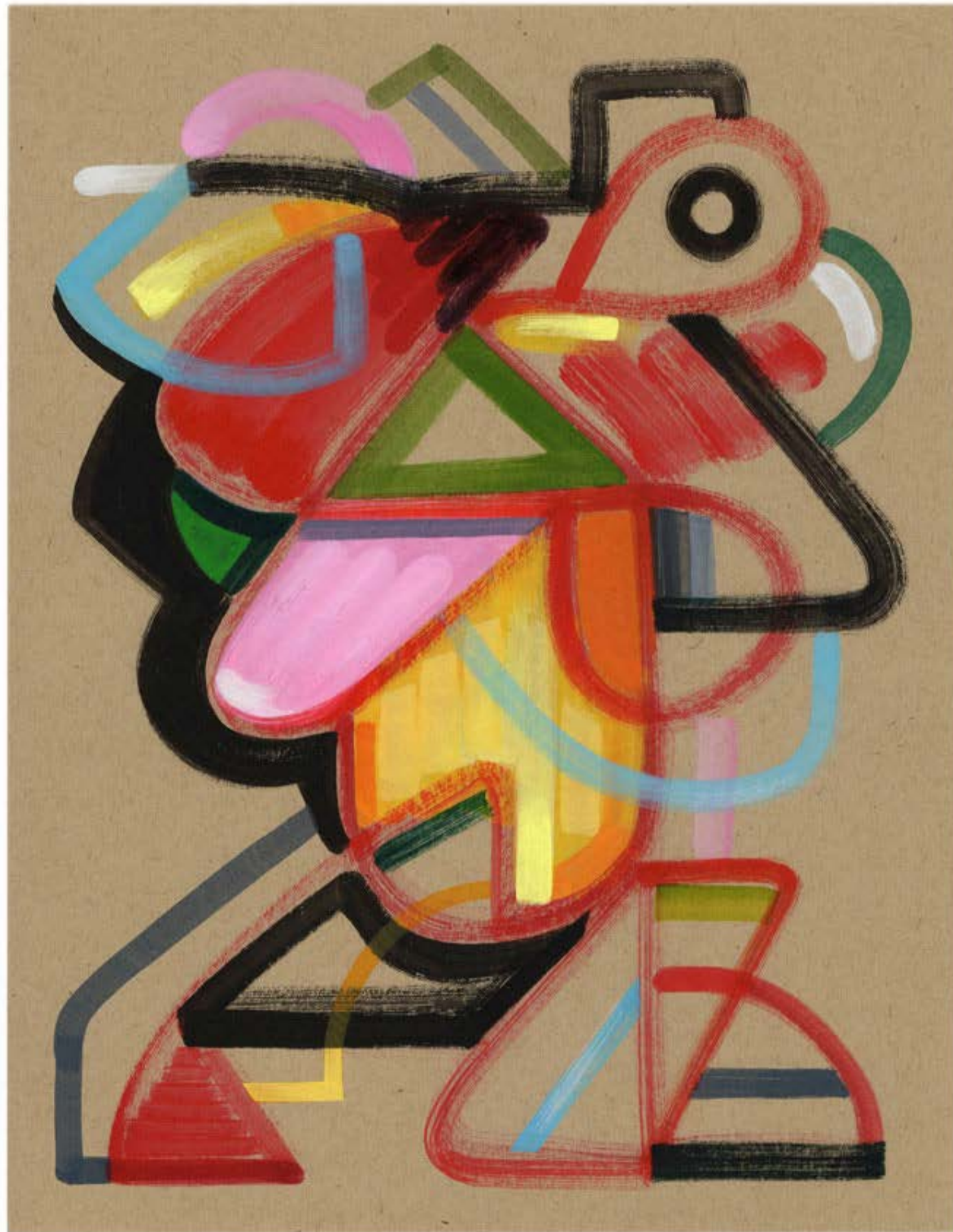
ROBERT
POKORNY

Blue Woman 1, 2017
Acrylic on Muscletone
11 x 8 1/2 in.
Framed



ROBERT
POKORNY

Multi Blue Man 1, 2017
Acrylic on Muscletone
11 x 8 1/2 in.
Framed



ROBERT
POKORNY

Multi Red Man 1, 2017
Acrylic on Muscletone
11 x 8 1/2 in.
Framed



ROBERT
POKORNY

Multi Man 1, 2017
Acrylic on Saunders watercolor paper
11 x 8 1/2 in.
Framed



ROBERT
POKORNY

Multi Man 2, 2017
Acrylic on Saunders watercolor paper
11 x 8 1/2 in.
Framed



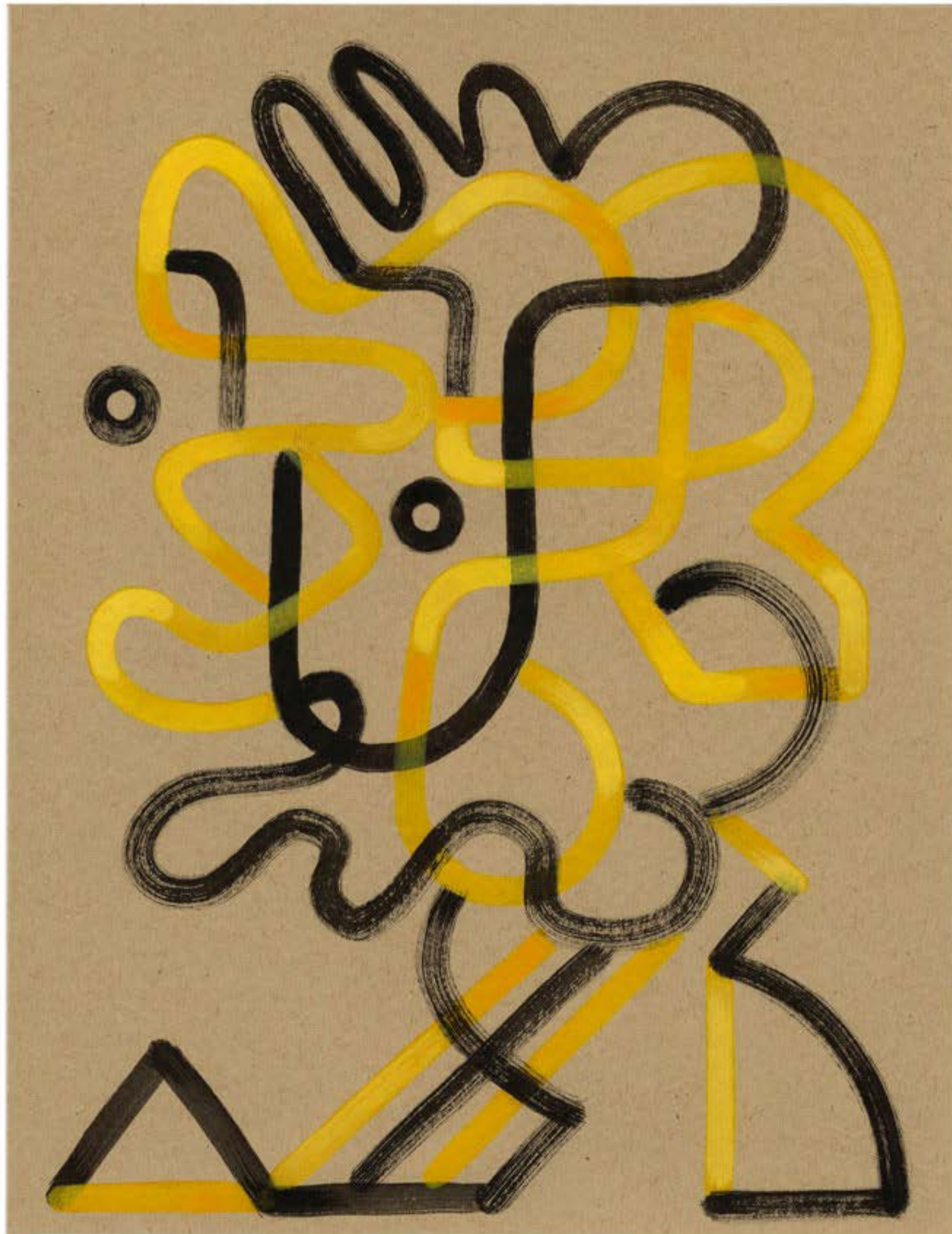
ROBERT
POKORNY

Red Man 1, 2017
Acrylic on Saunders watercolor paper
11 x 8 1/2 in.
Framed



ROBERT
POKORNY

Red Man 2, 2017
Acrylic on Saunders watercolor paper
11 x 8 1/2 in.
Framed



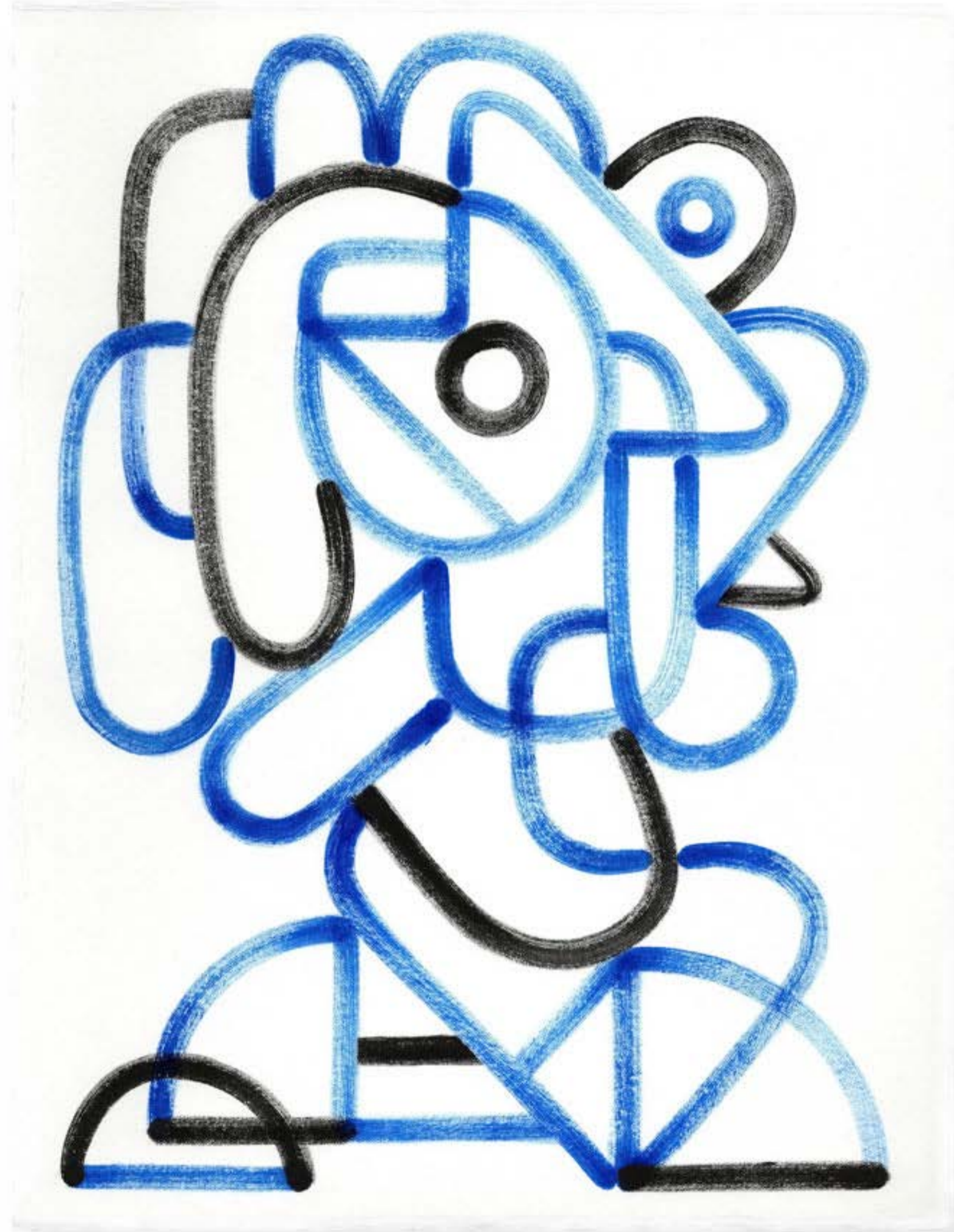
ROBERT
POKORNY

Yellow Line Man 1, 2017
Acrylic on Muscletone
11 x 8 1/2 in.
Framed



ROBERT
POKORNY

Yellow Line Man 2, 2017
Acrylic on Muscletone
11 x 8 1/2 in.
Framed



ROBERT
POKORNY

Blue Line Man 3, 2017
Acrylic on Saunders watercolor paper
11 x 8 1/2 in.
Unframed



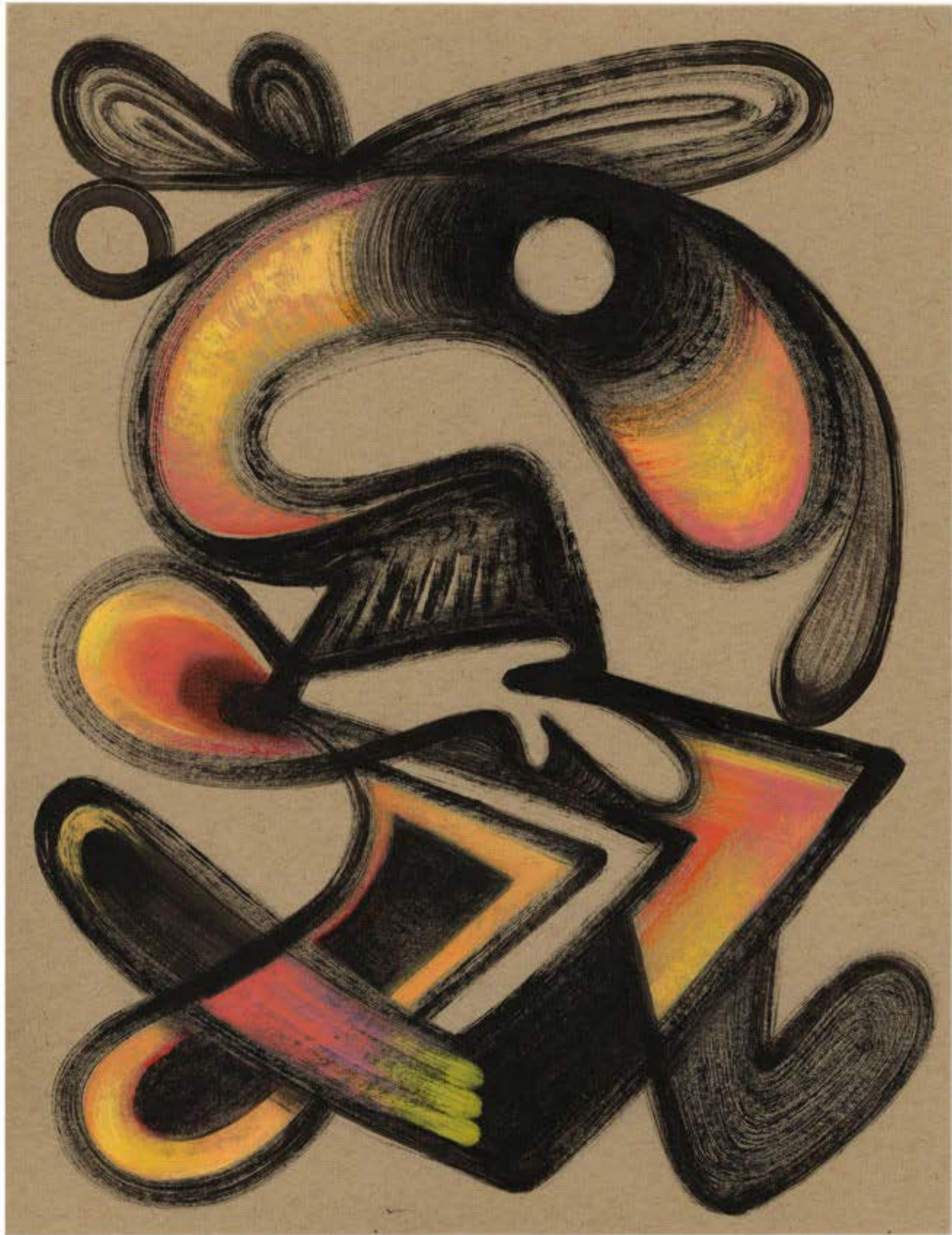
ROBERT
POKORNY

Blue Man 1, 2017
Acrylic on Muscletone
11 x 8 1/2 in.
Unframed



ROBERT
POKORNY

Green Line Woman 1, 2017
Acrylic on Muscletone
11 x 8 1/2 in.
Unframed



ROBERT
POKORNY

Orange Man 1, 2017
Acrylic on Muscletone
11 x 8 1/2 in.
Unframed



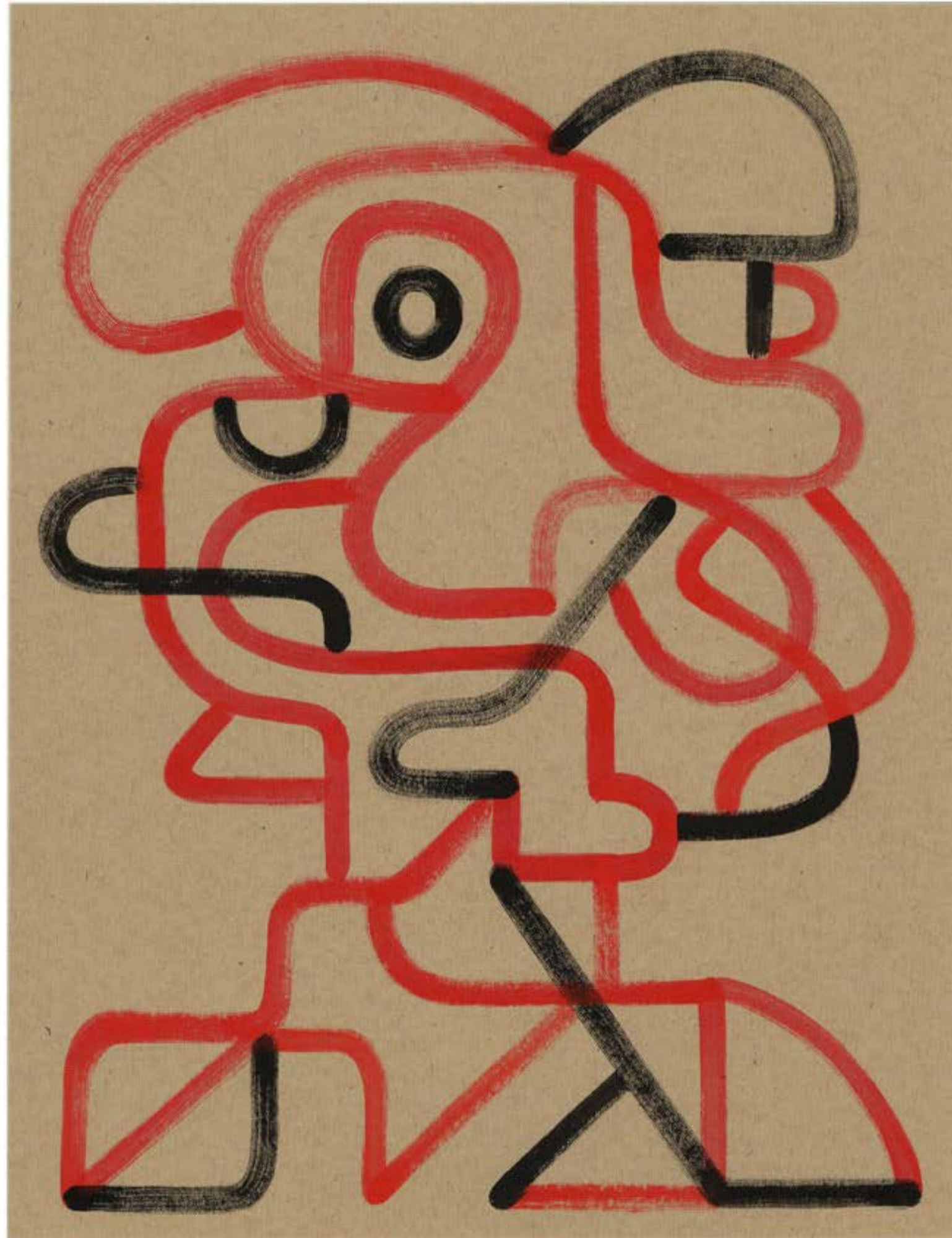
ROBERT
POKORNY

Orange Woman 1, 2017
Acrylic on Muscletone
11 x 8 1/2 in.
Unframed



ROBERT
POKORNY

Red Line Man 1, 2017
Acrylic on Muscletone
11 x 8 1/2 in.
Unframed



ROBERT
POKORNY

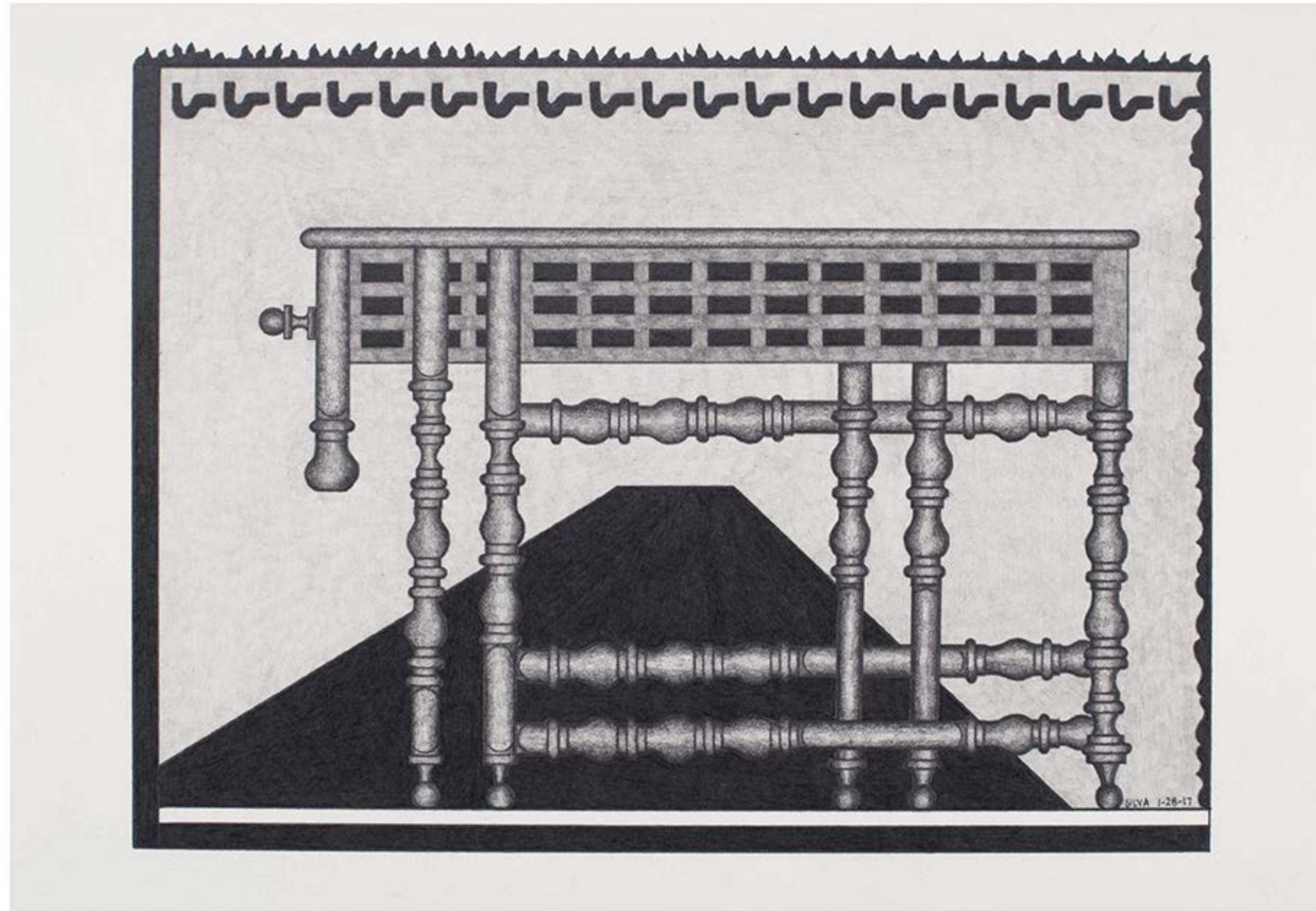
Red Line Man 2, 2017
Acrylic on Muscletone
11 x 8 1/2 in.
Unframed

JASON
SILVA



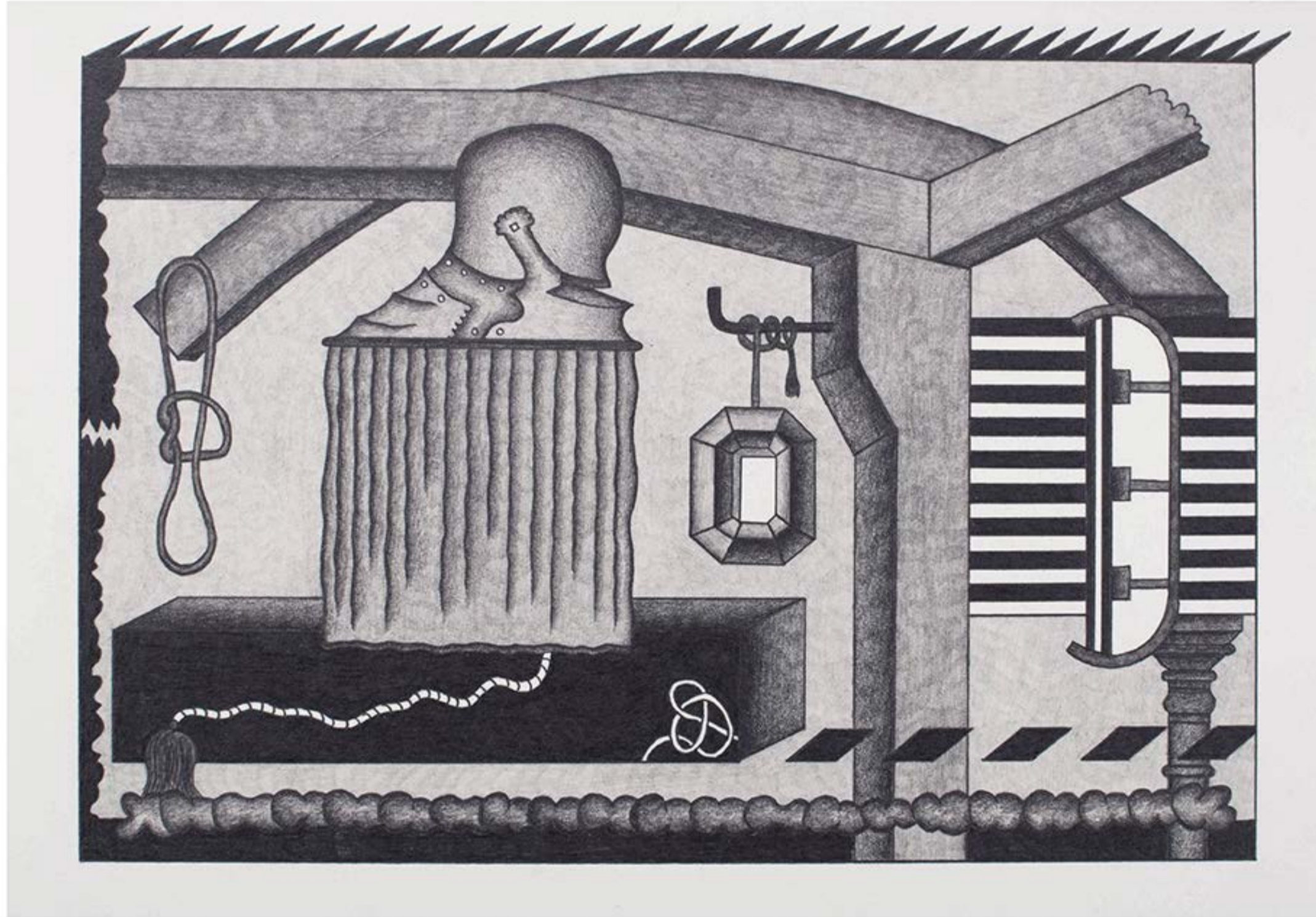
1-15-17, 2017
Graphite in paper
7 x 10 in.
Framed

JASON
SILVA



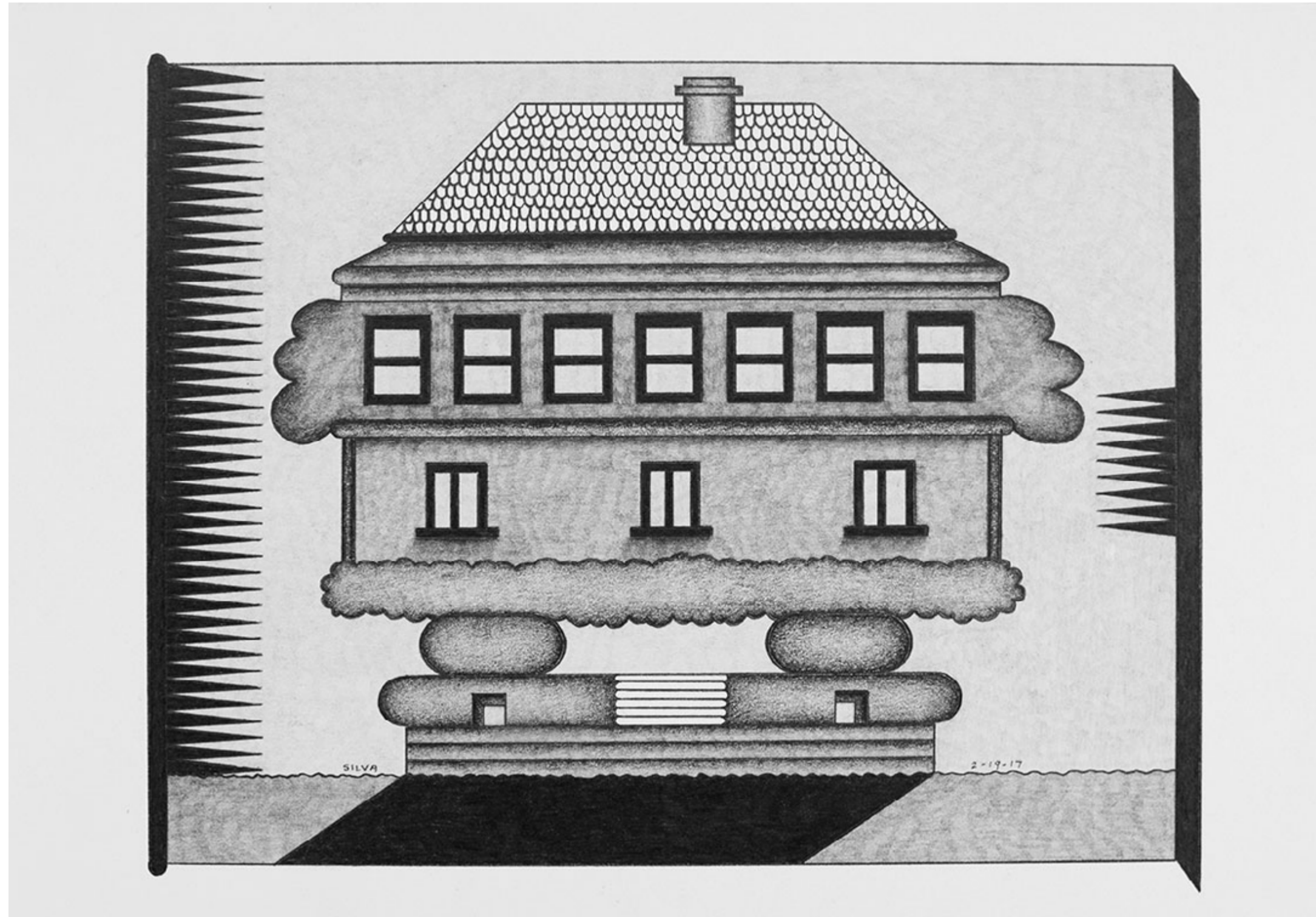
1-28-17, 2017
Graphite in paper
10 x 7 in.
Framed

JASON
SILVA



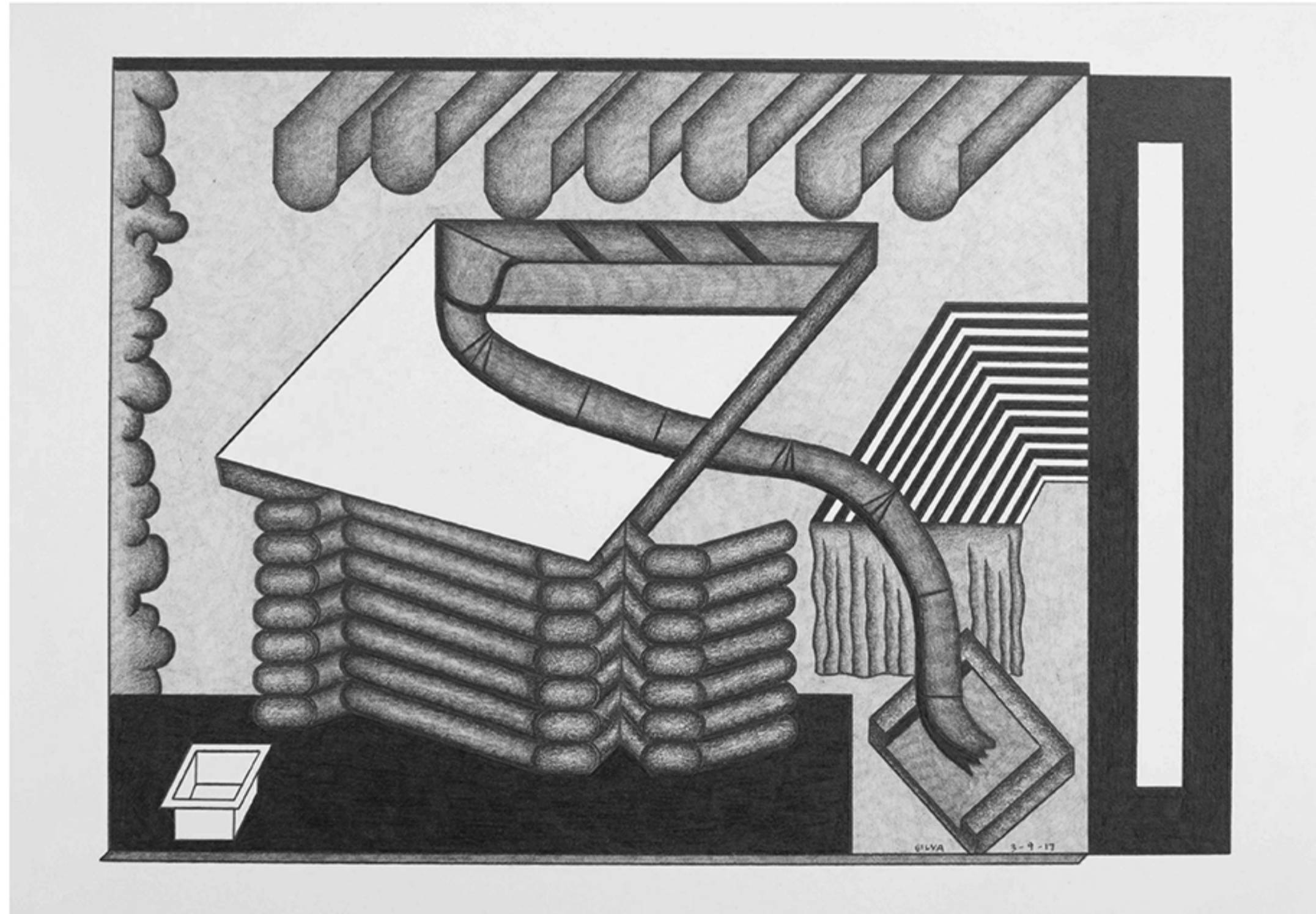
2-4-17, 2017
Graphite in paper
10 x 7 in.
Framed

JASON
SILVA



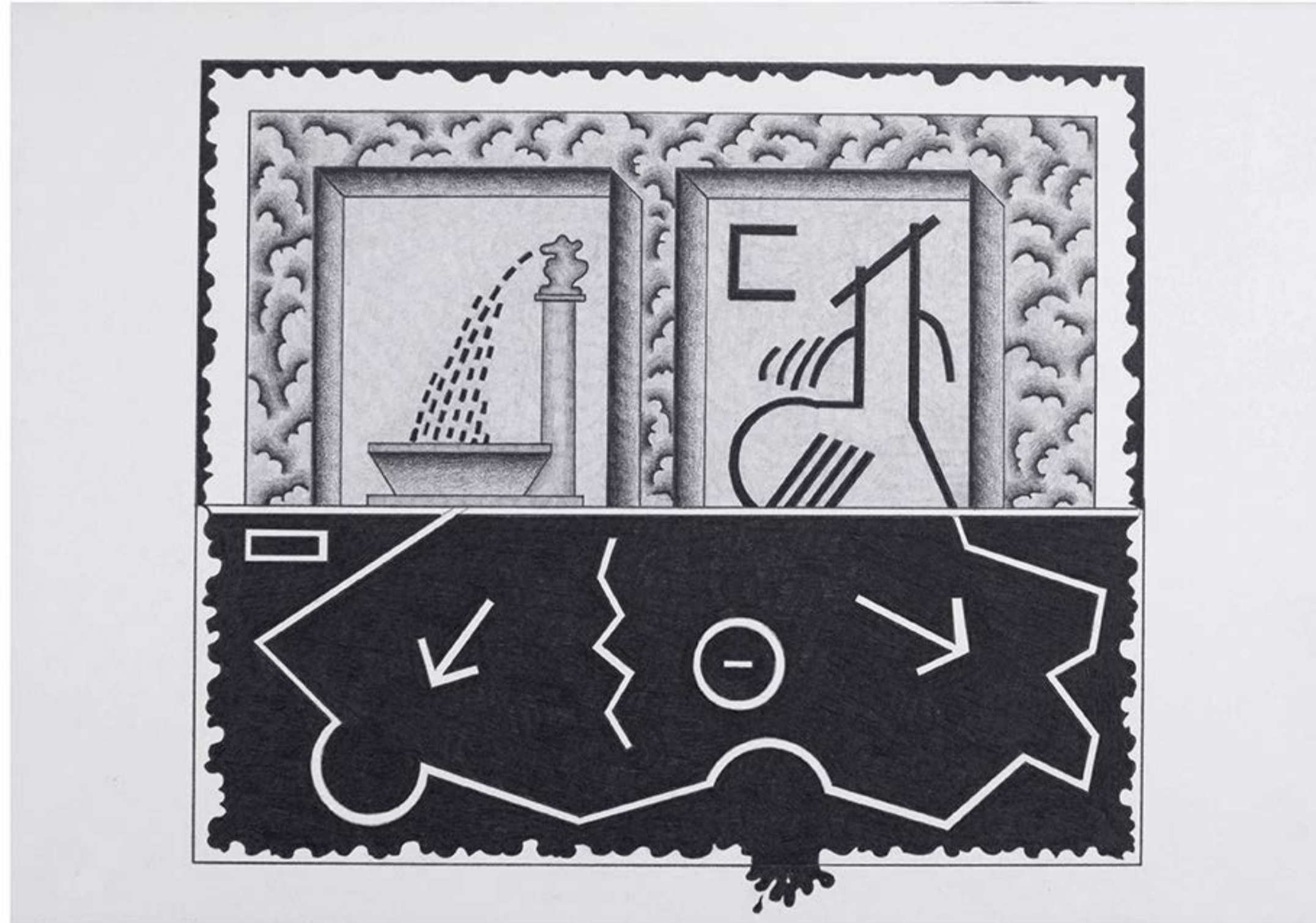
2-19-17, 2017
Graphite in paper
10 x 7 in.
Framed

JASON
SILVA



3-9-17, 2017
Graphite in paper
10 x 7 in.
Framed

JASON
SILVA



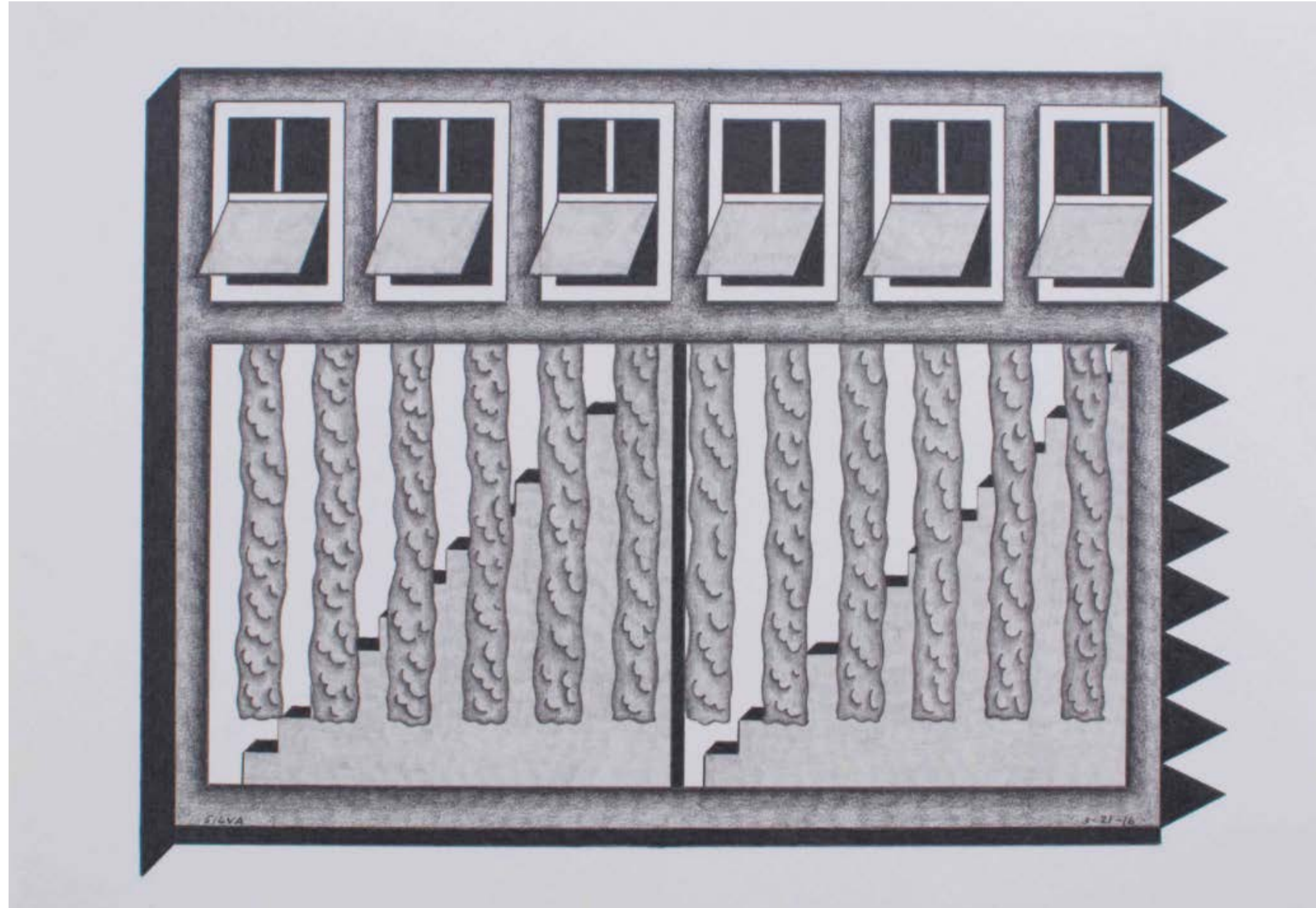
3-12-16, 2017
Graphite in paper
10 x 7 in.
Framed

JASON
SILVA



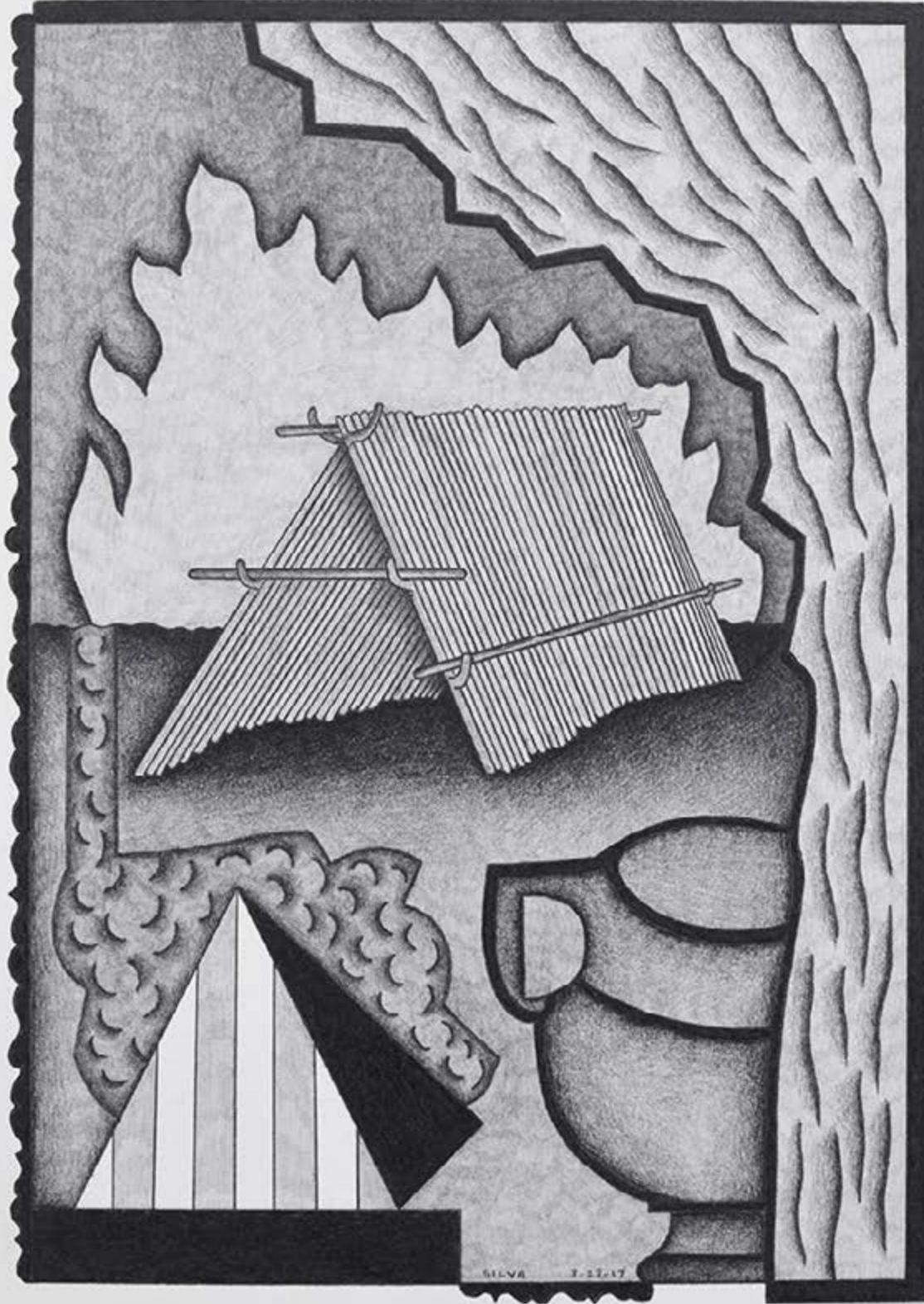
3-17-17, 2017
Graphite in paper
7 x 10 in.
Framed

JASON
SILVA



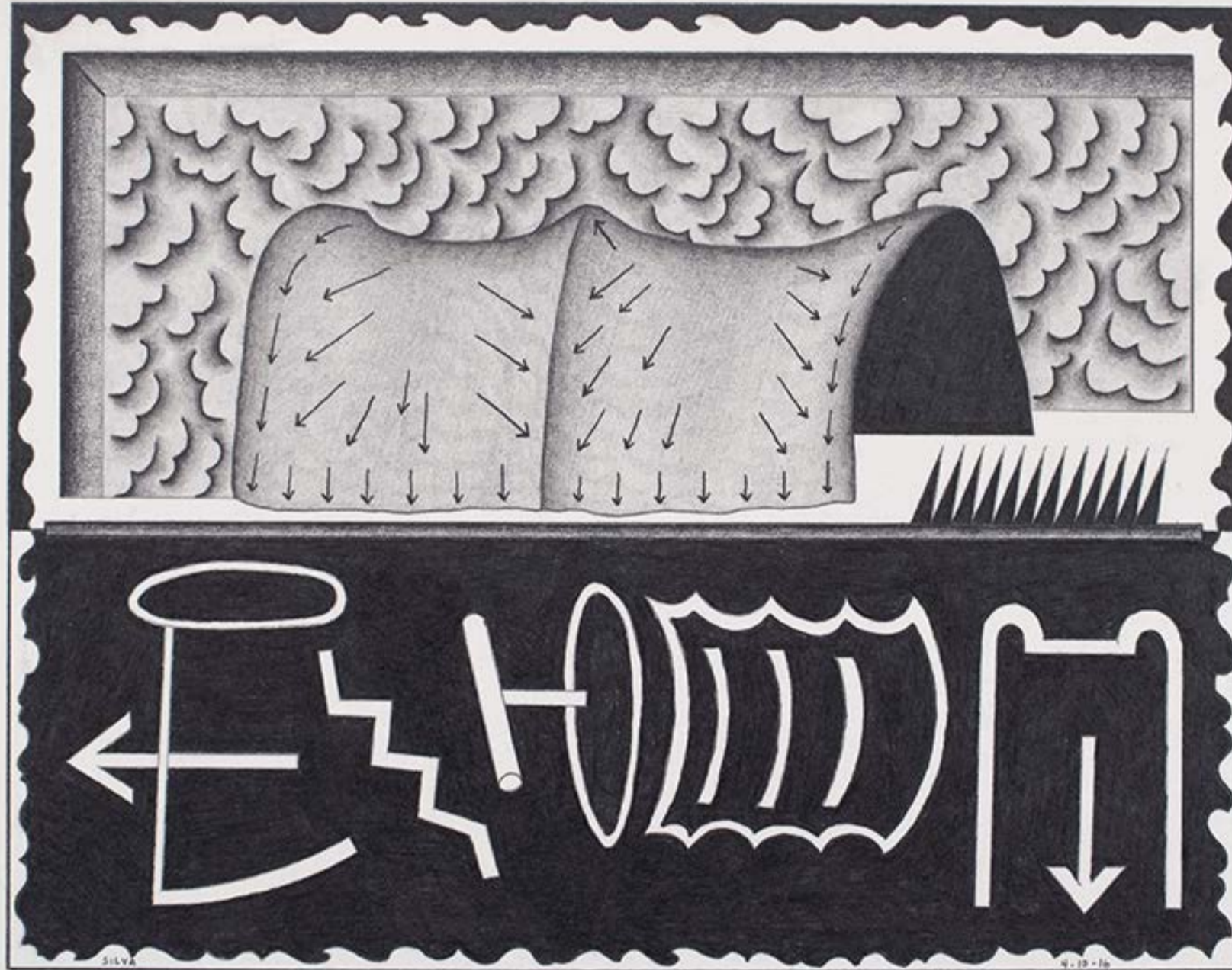
3-21-16, 2017
Graphite in paper
10 x 7 in.
Framed

JASON
SILVA



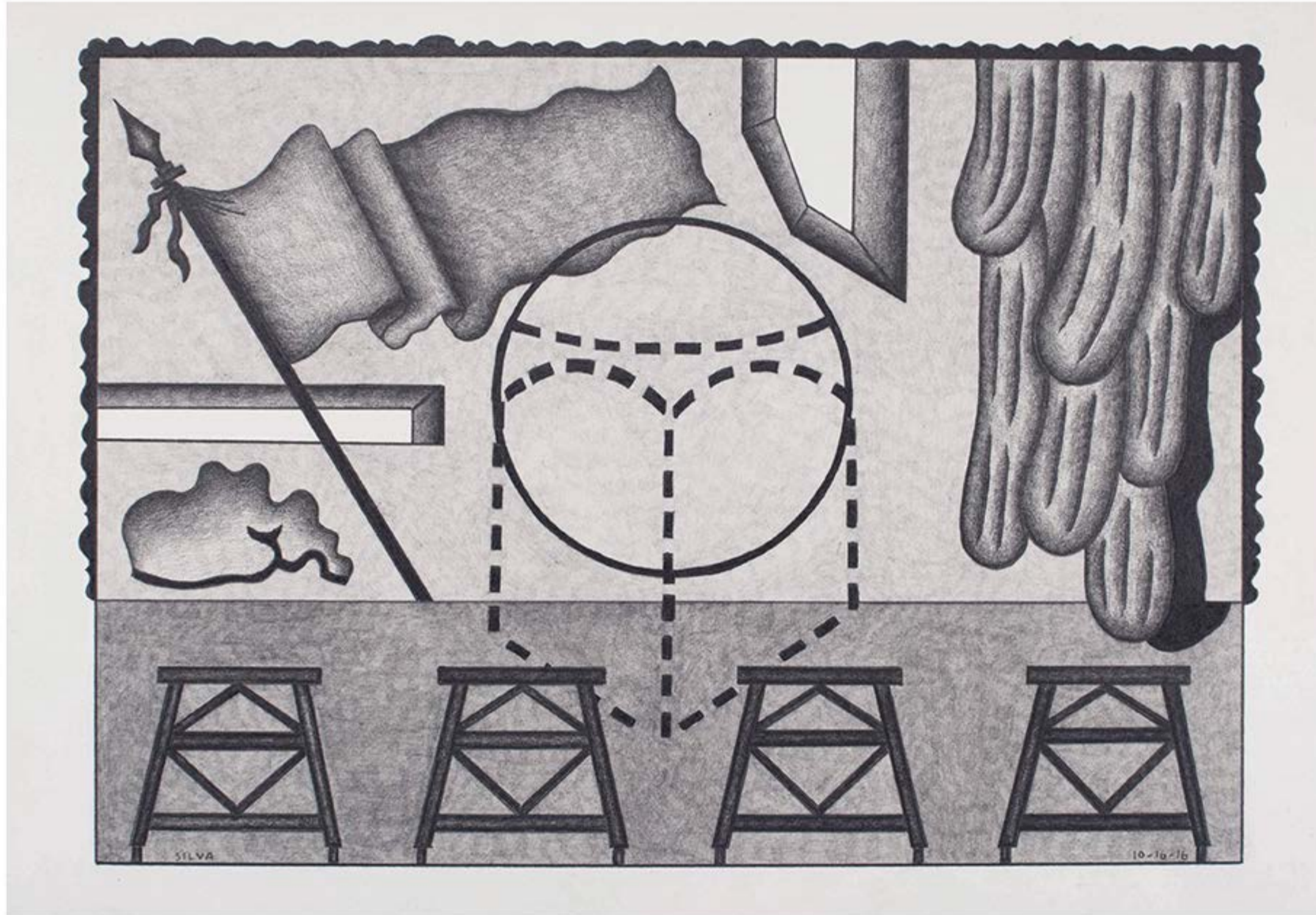
3-23-17, 2017
Graphite in paper
7 x 10 in. v
Framed

JASON
SILVA



4-10-16, 2017
Graphite in paper
10 x 7 in.
Framed

JASON
SILVA



10-10-16, 2017
Graphite in paper
10 x 7 in.
Framed



HOWARD
FONDA

Untitled, 2014
Color pencil on paper
17 x 14 in.
HH01



HOWARD
FONDA

Untitled, 2014
Color pencil on paper
17 x 14 in.
HH02



HOWARD
FONDA

Untitled, 2015
Color pencil on paper
17 x 14 in.
HH03



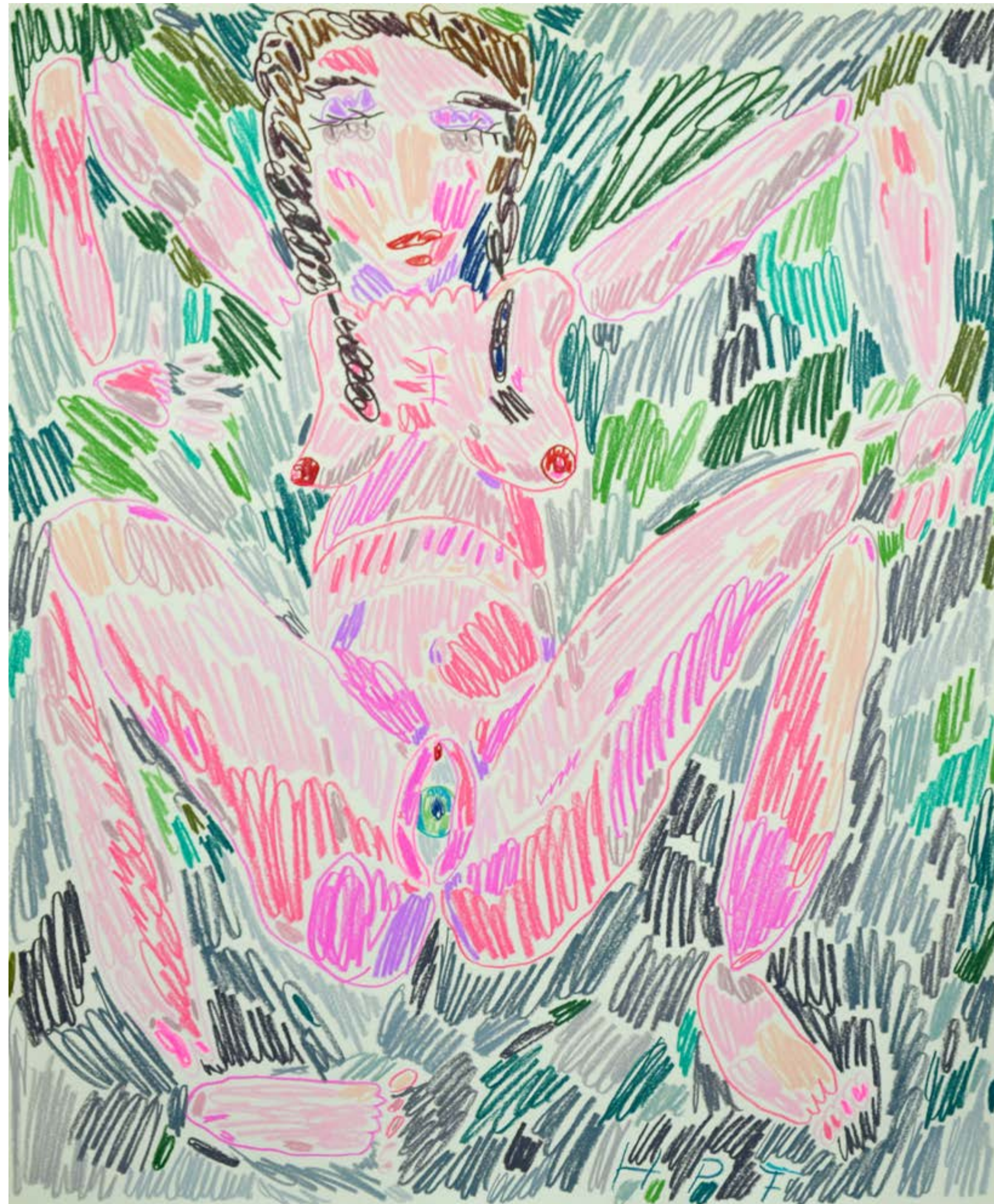
HOWARD
FONDA

Untitled, 2014
Color pencil on paper
14 x 11 in.
HH04



HOWARD
FONDA

Untitled, 2013
Color pencil on paper
14 x 11 in.
HH05



HOWARD
FONDA

Untitled, 2016
Color pencil on paper
17 x 14 in.
HH06



HOWARD
FONDA

Untitled, 2016
Color pencil on paper
17 x 14 in.
HH07



HOWARD
FONDA

Untitled, 2016
Color pencil on paper
17 x 14 in.
HH08



HOWARD
FONDA

Untitled, 2016
Color pencil on paper
17 x 14 in.
HH09



HOWARD
FONDA

Untitled, 2016
Color pencil on paper
17 x 14 in.
HH10



HOWARD
FONDA

Untitled, 2015
Color pencil on paper
17 x 14 in.
HH11



HOWARD
FONDA

Untitled, 2014
Color pencil on paper
17 x 14 in.
HH12



HOWARD
FONDA

Untitled, 2015
Color pencil on paper
17 x 14 in.
HH13



HOWARD
FONDA

Untitled, 2014
Color pencil on paper
17 x 14 in.
HH14



HOWARD
FONDA

Untitled, 2014
Color pencil on paper
17 x 14 in.
HH15

DUTCH ROYALTY HOWARD FONDA 1/4



HOWARD
FONDA

Untitled, 2014
Color pencil on paper
17 x 14 in.
HH16



HOWARD
FONDA

Untitled, 2013
Color pencil on paper
14 x 11 in.
HH17



HOWARD
FONDA

Untitled, 2013
Color pencil on paper
14 x 11 in.
HH18

AMPERSAND

GALLERY & FINE BOOKS

SALES

MYLES HASELHORST, 503-805-5458

myles@ampersandgallerypdx.com

GALLERY

2916 NE ALBERTA STREET

PORTLAND, OR 97217

WWW.AMPERSANDGALLERYPDX.COM